

SECTION 6, T.7N., R.2E., S.L.B.& M.

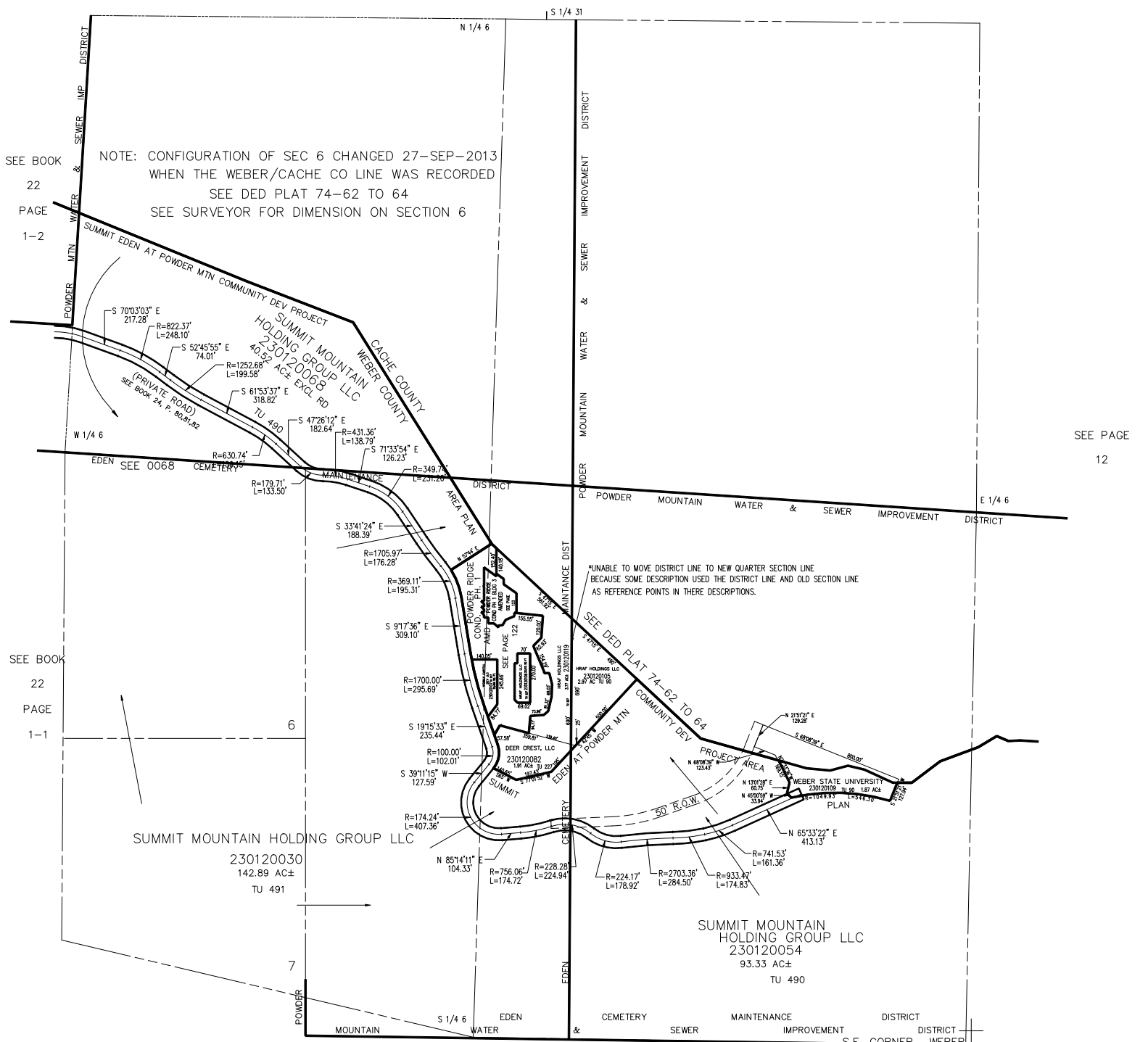
IN WEBER COUNTY

SCALE 1" = 400'

TAXING UNIT: 90, 227, 490, 491

SEE PAGE 45

ALSO SEE PAGES 12-2, 3



SEE BOOK
PAGE
22
1-2

NOTE: CONFIGURATION OF SEC 6 CHANGED 27-SEP-2013
 WHEN THE WEBER/CACHE CO LINE WAS RECORDED
 SEE DED PLAT 74-62 TO 64
 SEE SURVEYOR FOR DIMENSION ON SECTION 6

SEE PAGE
12

SEE BOOK
PAGE
22
1-1

23

NOTE: WEBER/CACHE ASSESSMENT LINE
 CHANGED TO COUNTY LINE - 1995

SEE PAGE 12

C.E. CORNER - WEBER
CO. SURVEYER - 1987

BDB 2-96